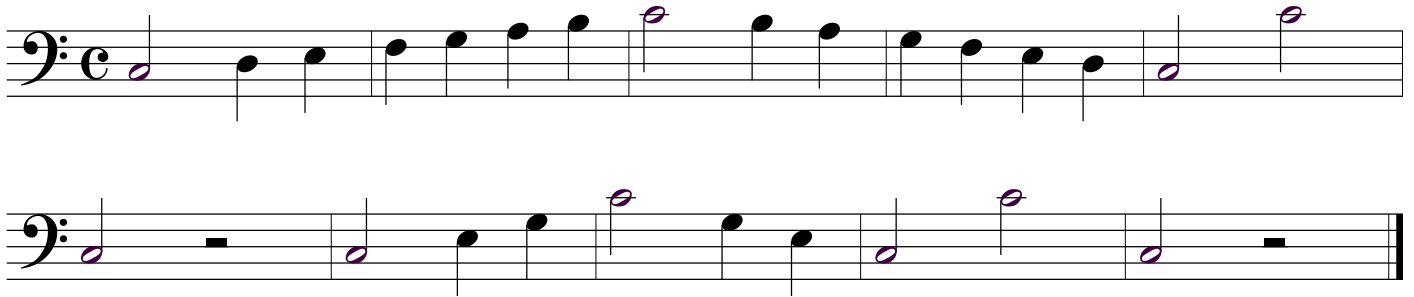


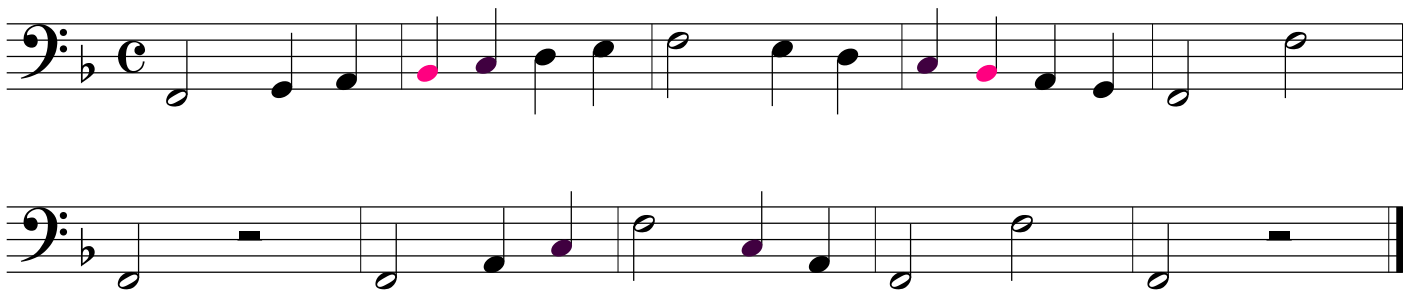
Tonleitern Übersicht

In dieser Übersicht sind nicht nur alle Tonarten notiert, sondern jede alterierte Note (Note mit Vorzeichen) ist farbig markiert.

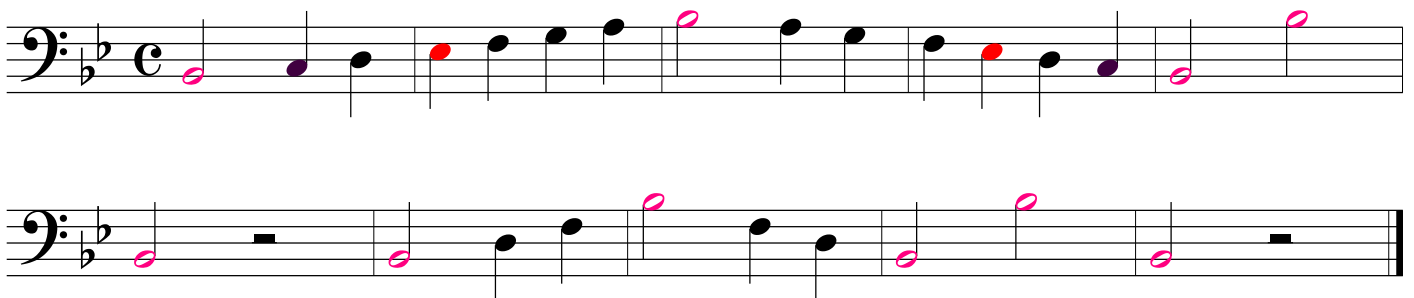
C-Dur



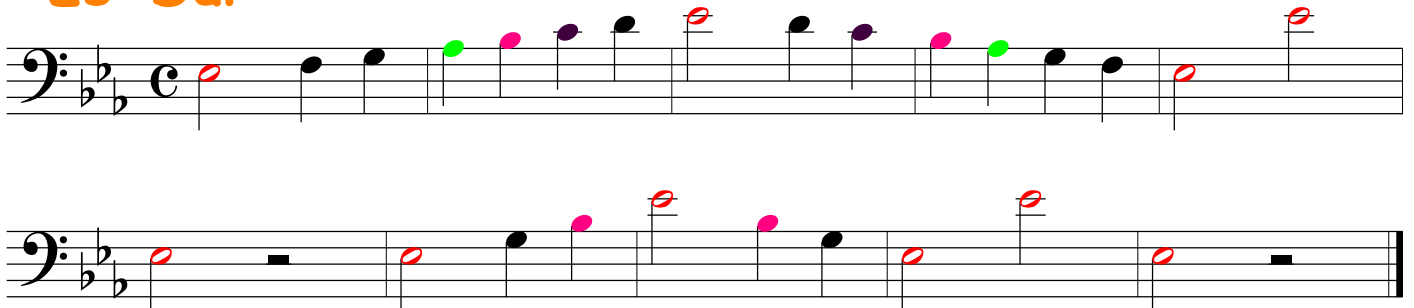
F-Dur



B-Dur



Es-Dur





As-Dur

Two staves of musical notation for the As-Dur scale in bass clef, common time. The first staff shows the ascending scale with notes: A2 (green), B2 (pink), C3 (purple), D3 (blue), E3 (red), F3 (black), G3 (green), A3 (black), B3 (red), C4 (blue), D4 (pink), E4 (green), F4 (black), G4 (green). The second staff shows the descending scale with notes: G4 (green), F4 (black), E4 (green), D4 (pink), C4 (blue), B3 (red), A3 (black), G3 (green), F3 (black), E3 (red), D3 (blue), C3 (purple), B2 (pink), A2 (green).

Des-Dur

Two staves of musical notation for the Des-Dur scale in bass clef, common time. The first staff shows the ascending scale with notes: D2 (blue), E2 (red), F2 (black), G2 (orange), A2 (green), B2 (pink), C3 (purple), D3 (blue), E3 (red), F3 (black), G3 (orange), A3 (green), B3 (pink), C4 (blue), D4 (blue). The second staff shows the descending scale with notes: C4 (blue), B3 (pink), A3 (green), G3 (orange), F3 (black), E3 (red), D3 (blue), C3 (purple), B2 (pink), A2 (green), G2 (orange), F2 (black), E2 (red), D2 (blue).

Ges-Dur

Two staves of musical notation for the Ges-Dur scale in bass clef, common time. The first staff shows the ascending scale with notes: G2 (orange), A2 (green), B2 (pink), C3 (black), D3 (blue), E3 (red), F3 (black), G3 (orange), A3 (green), B3 (pink), C4 (black), D4 (blue), E4 (red), F4 (black), G4 (orange). The second staff shows the descending scale with notes: F4 (black), E4 (red), D4 (blue), C4 (black), B3 (pink), A3 (green), G3 (orange), F3 (black), E3 (red), D3 (blue), C3 (black), B2 (pink), A2 (green), G2 (orange).

G-Dur

Two staves of musical notation for the G-Dur scale in bass clef, common time, with one sharp (F#). The first staff shows the ascending scale with notes: G2 (black), A2 (black), B2 (purple), C3 (black), D3 (black), E3 (orange), F#3 (black), G3 (black), A3 (black), B3 (purple), C4 (black), D4 (black), E4 (black), F#4 (black), G4 (black). The second staff shows the descending scale with notes: F#4 (black), E4 (black), D4 (black), C4 (black), B3 (purple), A3 (black), G3 (black), F#3 (black), E3 (orange), D3 (black), C3 (black), B2 (purple), A2 (black), G2 (black).

D-Dur

Two staves of musical notation for the D-Dur scale in bass clef, common time, with two sharps (F# and C#). The first staff shows the ascending scale with notes: D2 (black), E2 (black), F#2 (black), G2 (black), A2 (black), B2 (black), C#3 (black), D3 (black), E3 (black), F#3 (black), G3 (black), A3 (black), B3 (black), C#4 (black), D4 (black). The second staff shows the descending scale with notes: C#4 (black), B3 (black), A3 (black), G3 (black), F#3 (black), E3 (black), D3 (black), C#3 (black), B2 (black), A2 (black), G2 (black), F#2 (black), E2 (black), D2 (black).



A-Dur

Two staves of musical notation for the A-Dur scale in bass clef, common time. The first staff shows the ascending scale: A2 (black), B2 (black), C3 (blue), D3 (black), E3 (black), F3 (orange), G3 (green), A3 (black), B3 (black), C4 (blue), D4 (black), E4 (black), F4 (orange), G4 (green), A4 (black). The second staff shows the descending scale: A4 (black), G4 (green), F4 (orange), E4 (black), D4 (black), C4 (blue), B3 (black), A3 (black), G3 (green), F3 (orange), E3 (black), D3 (black), C3 (blue), B2 (black), A2 (black).

E-Dur

Two staves of musical notation for the E-Dur scale in bass clef, common time. The first staff shows the ascending scale: E2 (black), F2 (black), G2 (black), A2 (black), B2 (black), C3 (blue), D3 (black), E3 (red), F3 (black), G3 (black), A3 (black), B3 (black), C4 (blue), D4 (black), E4 (red), F4 (black), G4 (black), A4 (black), B4 (black), C5 (black), D5 (black), E5 (black). The second staff shows the descending scale: E5 (black), D5 (black), C5 (black), B4 (black), A4 (black), G4 (black), F4 (black), E4 (red), D4 (black), C4 (blue), B3 (black), A3 (black), G3 (black), F3 (black), E3 (red), D3 (black), C3 (blue), B2 (black), A2 (black), G2 (black), F2 (black), E2 (black).

H-Dur

Two staves of musical notation for the H-Dur scale in bass clef, common time. The first staff shows the ascending scale: H2 (black), B2 (black), C3 (blue), D3 (black), E3 (black), F3 (orange), G3 (green), A3 (pink), B3 (black), C4 (blue), D4 (black), E4 (black), F4 (orange), G4 (green), A4 (pink), B4 (black), C5 (black), D5 (black), E5 (black). The second staff shows the descending scale: E5 (black), D5 (black), C5 (black), B4 (black), A4 (pink), G4 (green), F4 (orange), E4 (black), D4 (black), C4 (blue), B3 (black), A3 (pink), G3 (green), F3 (orange), E3 (black), D3 (black), C3 (blue), B2 (black), A2 (black), G2 (black), F2 (black), E2 (black).

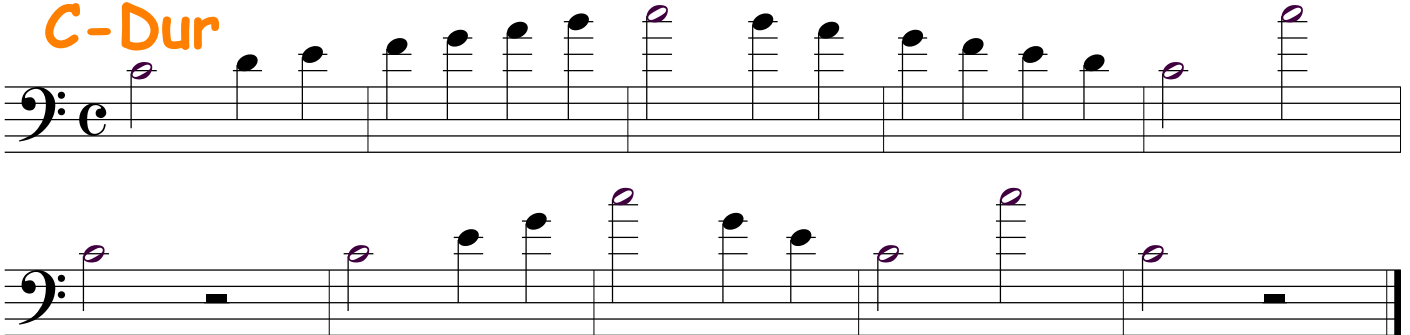
Fis-Dur

Two staves of musical notation for the Fis-Dur scale in bass clef, common time. The first staff shows the ascending scale: Fis2 (black), G2 (black), A2 (black), B2 (black), C3 (blue), D3 (black), E3 (black), Fis3 (black), G3 (black), A3 (black), B3 (black), C4 (blue), D4 (black), E4 (black), Fis4 (black), G4 (black), A4 (black), B4 (black), C5 (black), D5 (black), E5 (black). The second staff shows the descending scale: E5 (black), D5 (black), C5 (black), B4 (black), A4 (black), G4 (black), Fis4 (black), E4 (black), D4 (black), C4 (blue), B3 (black), A3 (black), G3 (black), Fis3 (black), E3 (black), D3 (black), C3 (blue), B2 (black), A2 (black), G2 (black), Fis2 (black), E2 (black).

Tonleitern Übersicht

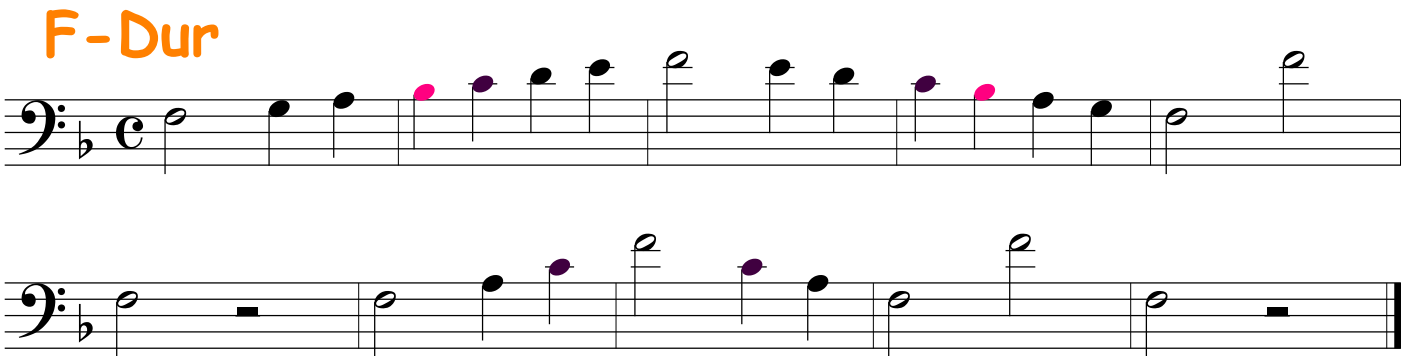
In dieser Übersicht sind nicht nur alle Tonarten notiert, sondern jede alterierte Note (Note mit Vorzeichen) ist farbig markiert.

C-Dur



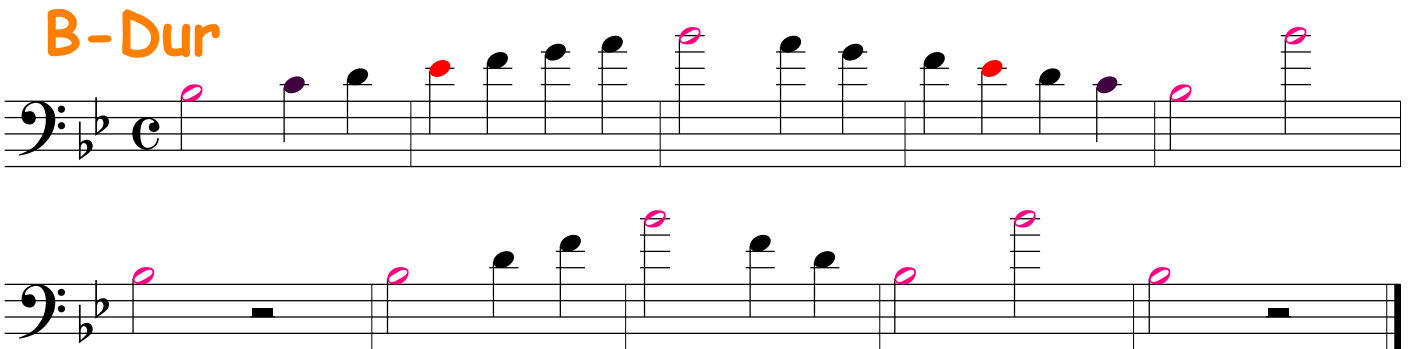
Two staves of musical notation for the C-Dur scale. The top staff shows the ascending scale: C4, D4, E4, F4, G4, A4, B4, C5, B4, A4, G4, F4, E4, D4, C4. The bottom staff shows the descending scale: C4, B3, A3, G3, F3, E3, D3, C3, B2, A2, G2, F2, E2, D2, C2. The notes are marked with stems and flags, and the key signature is C major.

F-Dur



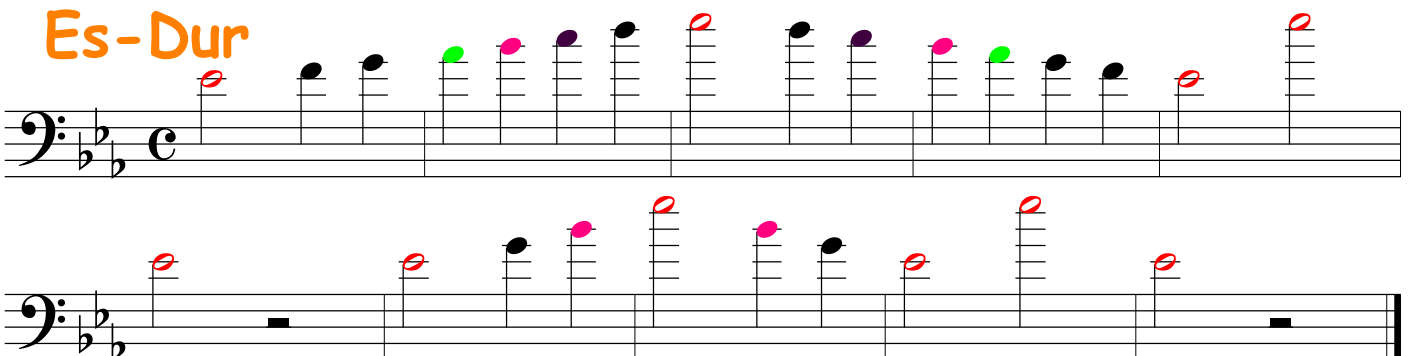
Two staves of musical notation for the F-Dur scale. The top staff shows the ascending scale: F4, G4, A4, Bb4, C5, Bb4, A4, G4, F4. The bottom staff shows the descending scale: F4, E4, D4, C4, Bb3, A3, G3, F3, E3, D3, C3, Bb2, A2, G2, F2. The notes are marked with stems and flags, and the key signature is F major.

B-Dur



Two staves of musical notation for the B-Dur scale. The top staff shows the ascending scale: B4, C5, D5, Eb5, F5, Eb5, D5, C5, B5. The bottom staff shows the descending scale: B4, A4, G4, F4, Eb4, D4, C4, B3, Ab3, G3, F3, Eb3, D3, C3, B2. The notes are marked with stems and flags, and the key signature is B major.

Es-Dur



Two staves of musical notation for the Es-Dur scale. The top staff shows the ascending scale: E4, F4, G4, Ab4, Bb4, C5, Bb4, Ab4, G4, F4, E4. The bottom staff shows the descending scale: E4, D4, C4, Bb3, Ab3, G3, F3, Eb3, D3, C3, Bb2, Ab2, G2, F2, Eb2, D2, C2. The notes are marked with stems and flags, and the key signature is E major.



As-Dur

Two staves of musical notation for the As-Dur scale in bass clef, 4/4 time. The first staff shows the ascending scale with notes: A2 (green), B2 (pink), C3 (purple), D3 (blue), E3 (red), F3 (black), G3 (black), A3 (green), B3 (black), C4 (black), D4 (red), E4 (blue), F4 (purple), G4 (pink), A4 (green). The second staff shows the descending scale with notes: A4 (green), G4 (green), F4 (purple), E4 (red), D4 (black), C4 (black), B3 (purple), A3 (green), G3 (black), F3 (black), E3 (red), D3 (blue), C3 (purple), B2 (pink), A2 (green).

Des-Dur

Two staves of musical notation for the Des-Dur scale in bass clef, 4/4 time. The first staff shows the ascending scale with notes: D3 (blue), E3 (red), F3 (black), G3 (black), A3 (green), B3 (purple), C4 (blue), D4 (purple), E4 (pink), F4 (green), G4 (orange), A4 (black), B4 (red), C5 (blue), D5 (blue). The second staff shows the descending scale with notes: D5 (blue), C5 (blue), B4 (blue), A4 (black), G4 (green), F4 (black), E4 (purple), D4 (black), C4 (blue), B3 (purple), A3 (green), G3 (black), F3 (black), E3 (red), D3 (blue).

Ges-Dur

Two staves of musical notation for the Ges-Dur scale in bass clef, 4/4 time. The first staff shows the ascending scale with notes: G3 (orange), A3 (green), B3 (pink), C4 (black), D4 (blue), E4 (red), F4 (black), G4 (orange), A4 (black), B4 (red), C5 (blue), D5 (black), E5 (pink), F5 (green), G5 (orange). The second staff shows the descending scale with notes: G5 (orange), F5 (orange), E5 (pink), D5 (blue), C5 (black), B4 (blue), A4 (pink), G4 (orange), F4 (black), E4 (red), D4 (black), C4 (black), B3 (pink), A3 (green), G3 (orange).

G-Dur

Two staves of musical notation for the G-Dur scale in bass clef, 4/4 time. The first staff shows the ascending scale with notes: G3 (black), A3 (black), B3 (purple), C4 (black), D4 (black), E4 (orange), F4 (black), G4 (black), A4 (black), B4 (purple), C5 (black), D5 (black), E5 (black), F5 (black), G5 (black). The second staff shows the descending scale with notes: G5 (black), F5 (black), E5 (black), D5 (black), C5 (black), B4 (black), A4 (black), G4 (black), F4 (black), E4 (black), D4 (black), C4 (black), B3 (black), A3 (black), G3 (black).

D-Dur

Two staves of musical notation for the D-Dur scale in bass clef, 4/4 time. The first staff shows the ascending scale with notes: D3 (black), E3 (black), F3 (black), G3 (black), A3 (black), B3 (blue), C4 (black), D4 (black), E4 (black), F4 (black), G4 (black), A4 (black), B4 (black), C5 (black), D5 (black). The second staff shows the descending scale with notes: D5 (black), C5 (black), B4 (black), A4 (black), G4 (black), F4 (black), E4 (black), D4 (black), C4 (black), B3 (black), A3 (black), G3 (black), F3 (black), E3 (black), D3 (black).



A-Dur

Two staves of musical notation for the A-Dur scale in bass clef, 4/4 time. The first staff shows the ascending scale: A2 (black), B2 (blue), C3 (black), D3 (black), E3 (orange), F#3 (green), G#3 (black), A3 (black), B3 (black), C4 (blue), D4 (black), E4 (black), F#4 (orange), G#4 (green), A4 (black). The second staff shows the descending scale: A4 (black), G#4 (green), F#4 (orange), E4 (black), D4 (black), C4 (blue), B3 (black), A3 (black), G#3 (black), F#3 (green), E3 (orange), D3 (black), C3 (black), B2 (blue), A2 (black).

E-Dur

Two staves of musical notation for the E-Dur scale in bass clef, 4/4 time. The first staff shows the ascending scale: E2 (orange), F#2 (green), G#2 (black), A2 (black), B2 (blue), C#2 (red), D#2 (black), E3 (black), F#3 (red), G#3 (blue), A3 (black), B3 (black), C#3 (green), D#3 (orange), E4 (black). The second staff shows the descending scale: E4 (black), D#3 (orange), C#3 (green), B3 (black), A3 (black), G#3 (blue), F#3 (red), E3 (black), D#2 (black), C#2 (red), B2 (blue), A2 (black), G#2 (black), F#2 (green), E2 (orange).

H-Dur

Two staves of musical notation for the H-Dur scale in bass clef, 4/4 time. The first staff shows the ascending scale: B1 (blue), C#1 (red), D#1 (black), E#1 (orange), F#1 (green), G#1 (pink), A#1 (black), B#1 (black), C#2 (pink), D#2 (green), E#2 (orange), F#2 (black), G#2 (blue), A#2 (black). The second staff shows the descending scale: B#1 (black), A#1 (black), G#1 (blue), F#1 (black), E#1 (orange), D#1 (black), C#1 (red), B1 (blue), A#1 (black), G#1 (green), F#1 (pink), E#1 (orange), D#1 (black), C#1 (black), B#1 (black).

Fis-Dur

Two staves of musical notation for the Fis-Dur scale in bass clef, 4/4 time. The first staff shows the ascending scale: F#1 (green), G#1 (pink), A#1 (black), B#1 (blue), C#1 (red), D#1 (black), E#1 (orange), F#2 (black), G#2 (black), A#2 (red), B#2 (blue), C#2 (pink), D#2 (green), E#2 (orange), F#3 (black). The second staff shows the descending scale: F#3 (black), E#2 (orange), D#2 (green), C#2 (pink), B#1 (blue), A#1 (black), G#1 (pink), F#1 (green), E#1 (orange), D#1 (black), C#1 (red), B#1 (black), A#1 (black), G#1 (black), F#1 (black).