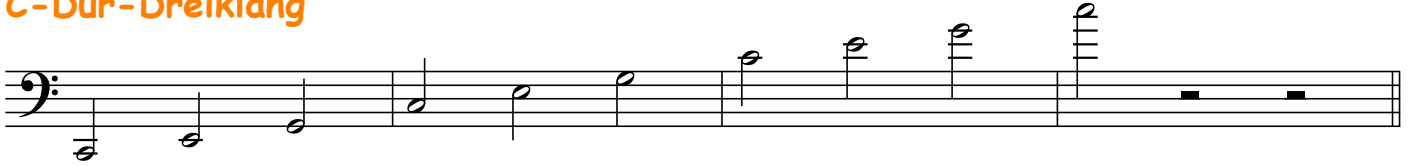


Dreiklänge in versch. Tonarten



C-Dur-Dreiklang



F-Dur-Dreiklang



B-Dur-Dreiklang



Es-Dur-Dreiklang



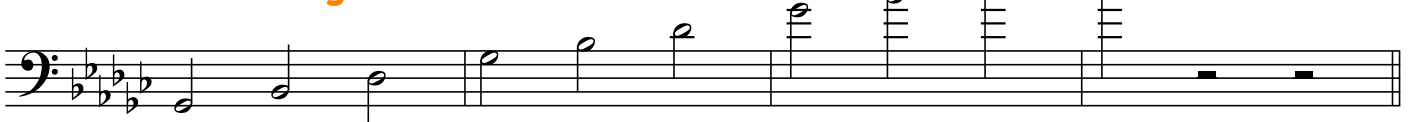
As-Dur-Dreiklang



Des-Dur-Dreiklang



Ges-Dur-Dreiklang



Übung 4

Three staves of bass clef music in common time (C). The first staff contains a sequence of eighth notes: C2, D2, E2, F2, G2, A2, B2, C3, D3, E3, F3, G3, A3, B3, C4. The second staff contains a sequence of eighth notes: C3, D3, E3, F3, G3, A3, B3, C4, D4, E4, F4, G4, A4, B4, C5. The third staff contains a sequence of eighth notes: C4, D4, E4, F4, G4, A4, B4, C5, D5, E5, F5, G5, A5, B5, C6.

Übung 5

Two staves of bass clef music in 3/4 time. The first staff contains a sequence of eighth notes: C2, D2, E2, F2, G2, A2, B2, C3, D3, E3, F3, G3, A3, B3, C4. The second staff contains a sequence of eighth notes: C3, D3, E3, F3, G3, A3, B3, C4, D4, E4, F4, G4, A4, B4, C5.

Übung 6

One staff of bass clef music in 6/8 time. The first half contains a sequence of eighth notes: C2, D2, E2, F2, G2, A2, B2, C3, D3, E3, F3, G3, A3, B3, C4. The second half contains a sequence of eighth notes: C4, D4, E4, F4, G4, A4, B4, C5, D5, E5, F5, G5, A5, B5, C6.

Übung 7

One staff of bass clef music in common time. The first half contains a sequence of eighth notes: C2, D2, E2, F2, G2, A2, B2, C3, D3, E3, F3, G3, A3, B3, C4. The second half contains a sequence of eighth notes: C4, D4, E4, F4, G4, A4, B4, C5, D5, E5, F5, G5, A5, B5, C6.

Übung 8

Three staves of bass clef music in 6/4 time. The first staff contains a sequence of eighth notes: C2, D2, E2, F2, G2, A2, B2, C3, D3, E3, F3, G3, A3, B3, C4. The second staff contains a sequence of eighth notes: C3, D3, E3, F3, G3, A3, B3, C4, D4, E4, F4, G4, A4, B4, C5. The third staff contains a sequence of eighth notes: C4, D4, E4, F4, G4, A4, B4, C5, D5, E5, F5, G5, A5, B5, C6.